

## Model 011-TU2:

### Compact miniature (snap-on) fiber collimator for POF fiber

Compact miniature fiber collimator for POF fiber (M011-TU2) consists of plastic body and optical lens assembly and can be attached directly to FC-, SC-, ST- type optical connector as shown in the photo. It collimates or focuses beams from different multi-mode fiber patch-cords, or couples collimated beams into connectorized MM optical fiber patch-cords. It works with optical fibers having  $NA < 0.5$ . Collimator contains an optical lens, adjustable along Z-axis only, providing collimation or focusing. Collimator is a compact device, having plastic body.

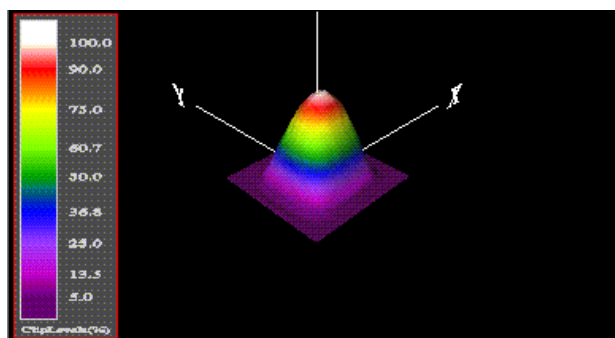
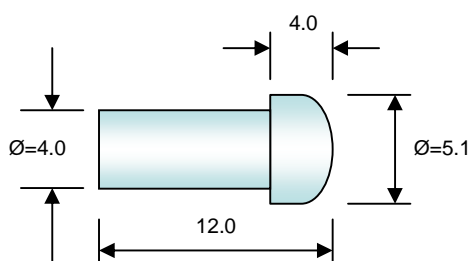


#### Key features:

- Compact *focusable broadband device*
- Non- magnetic body
- Can be used with different connectorized fibers (FC, - SC-, ST)

Operating wavelength (nm)	350-1000
Maximum optical power (mW)	500
Size (mm)	( 5x12)
Collimated beam diameter* (mm)	~0.3- 4.5
Fiber type	Multi mode, fiber core diameter: 100-980 um, NA<0.5
Return loss (dB)	-30 ...-35

\* Measured at distance of 25 mm from adjusted to collimation device



Typical field profile, measured at wavelength of ~530 nm for collimator attached to POF980/1000 MM FC/PC connectorized fiber patch-cord. TU-2 was adjusted to collimation